

Suggested Reference Sources:

2011-2030 Comprehensive Regional Water Management Plan

<http://www.wrwc.us/files/agendas/Final%202011-2030%20Water%20Management%20Plan%20Including%20Figures%20011411.pdf>

Policy 1.3.d: Water Resources and Land Use, pg 1-12

Policy 1.3.e: Water Resource Commitments, pg 1-12

Section 6.1: Comparison of the Consensus Population Forecast and the Estimated Population that can be Supported by the Sustainable Water Resources in the Planning Area, pgs 6-1 thru 6-5

Truckee Meadows Water Authority, 2016-2035 Water Resource Plan

http://www.tmwa.com/wp-content/uploads/docs/your_water/2035WRP/__2035_WRP_Volumell_chptr_1-6_Final.pdf

Water Rights, pgs 65-72

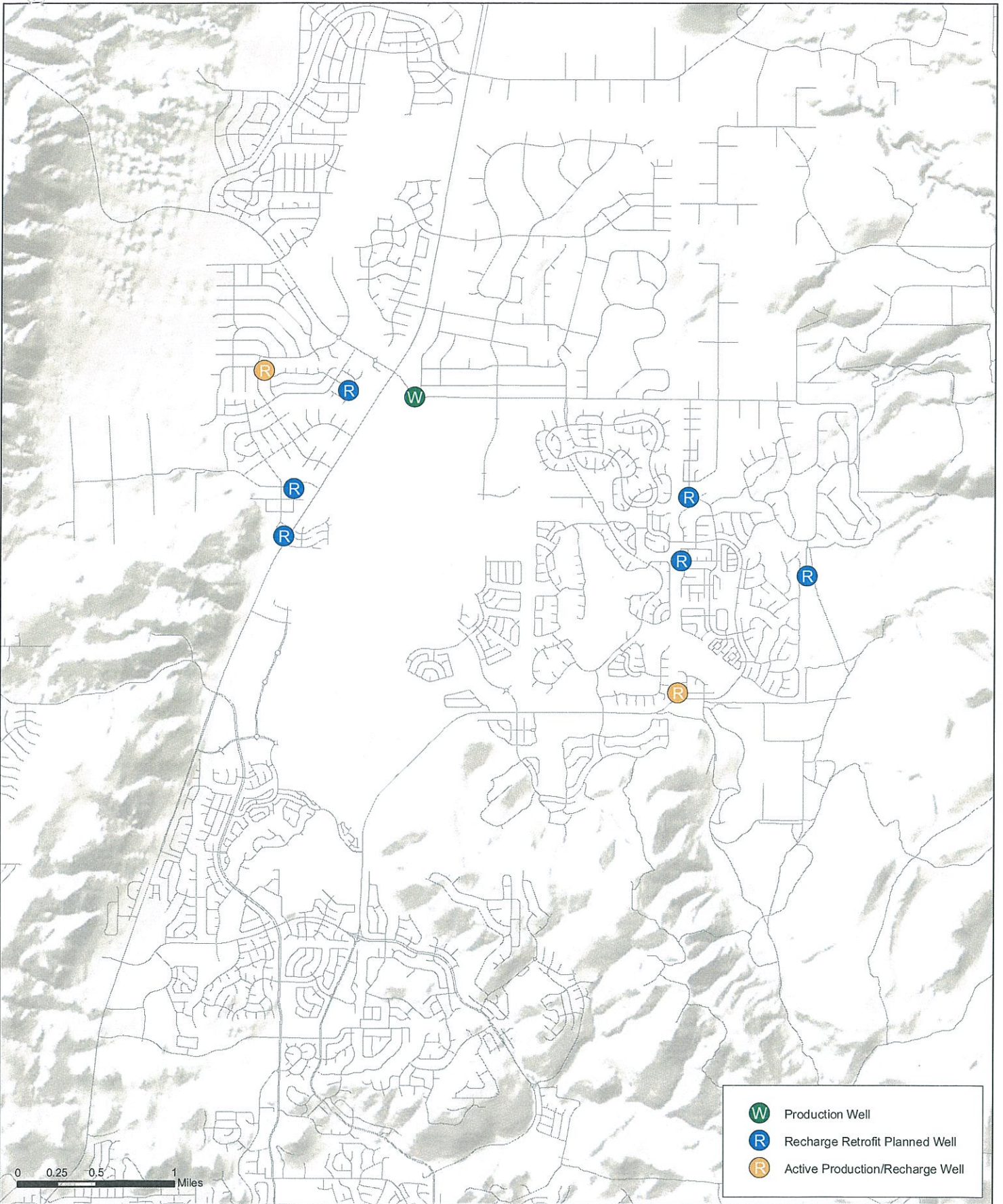
Water Demand Projections, pgs 105-111

Water Supply Planning Scenarios under TROA (Truckee River Operating Agreement) Operations, pgs 88-91

Historical Spanish Springs Valley Municipal Groundwater Pumping and Recharge

Attached

W:\projects\Facilities\Facility_clean_up\project\mxd\UK_8.5x11_2017_DESSERT_SPGS_WELL_TMWA_SSVZOOM.mxd

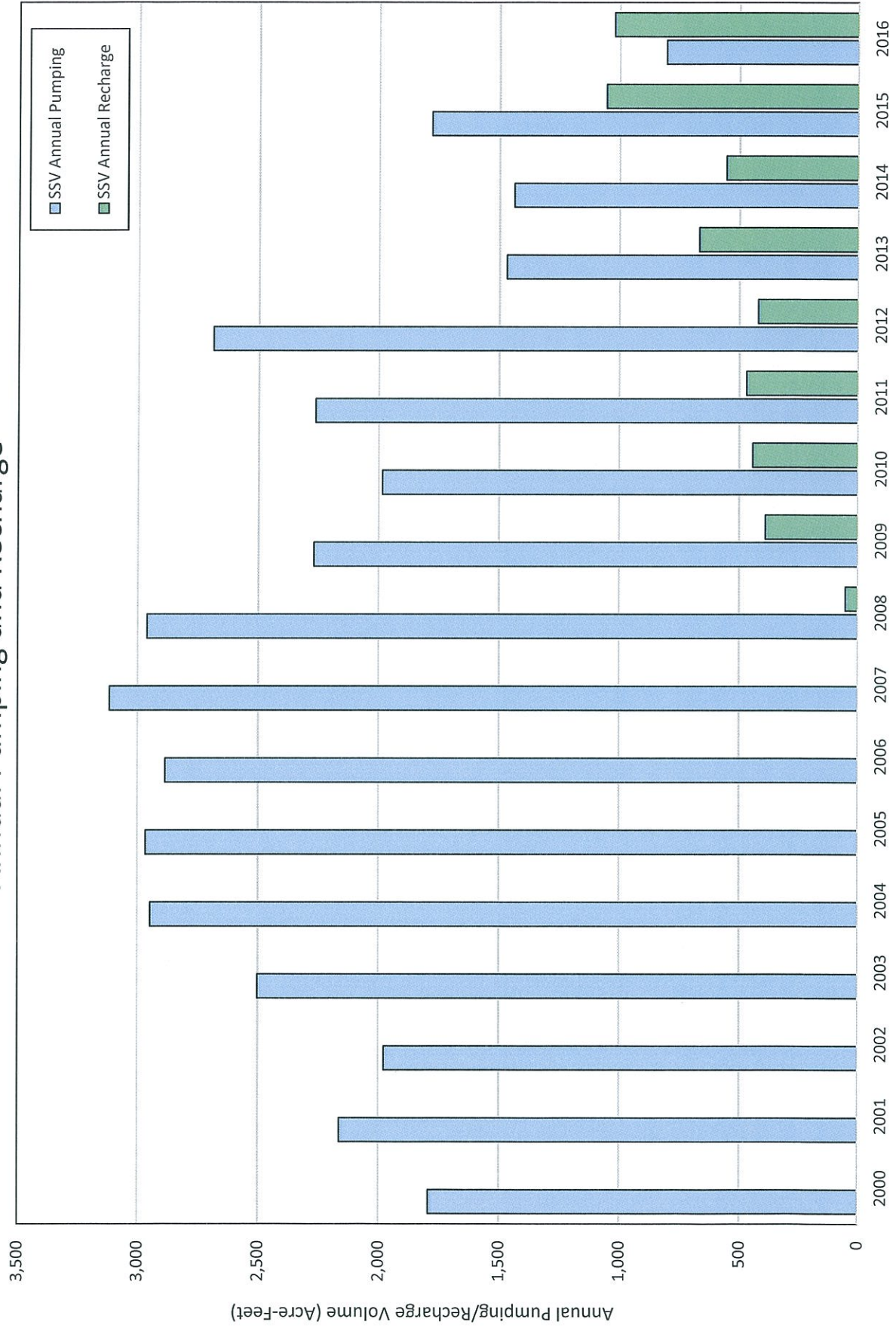


Current and Future Recharge in Spanish Springs Valley

DATE 02/03/2017
MAP BY: JK
REQUESTED BY: CK
SCALE: 1 in = 1 miles



Spanish Springs Valley Annual Pumping and Recharge



Pumping and Recharge in Spanish Springs Valley

Year	Total Pumping (Acre-Feet Annually)	Total Recharge (Acre-Feet Annually)
2000	1,795	--
2001	2,162	--
2002	1,977	--
2003	2,502	--
2004	2,947	--
2005	2,967	--
2006	2,886	--
2007	3,116	--
2008	2,961	51
2009	2,268	391
2010	1,984	444
2011	2,263	470
2012	2,689	422
2013	1,469	669
2014	1,438	556
2015	1,782	1055
2016	805	1022